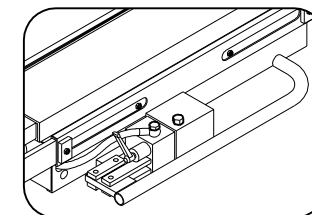
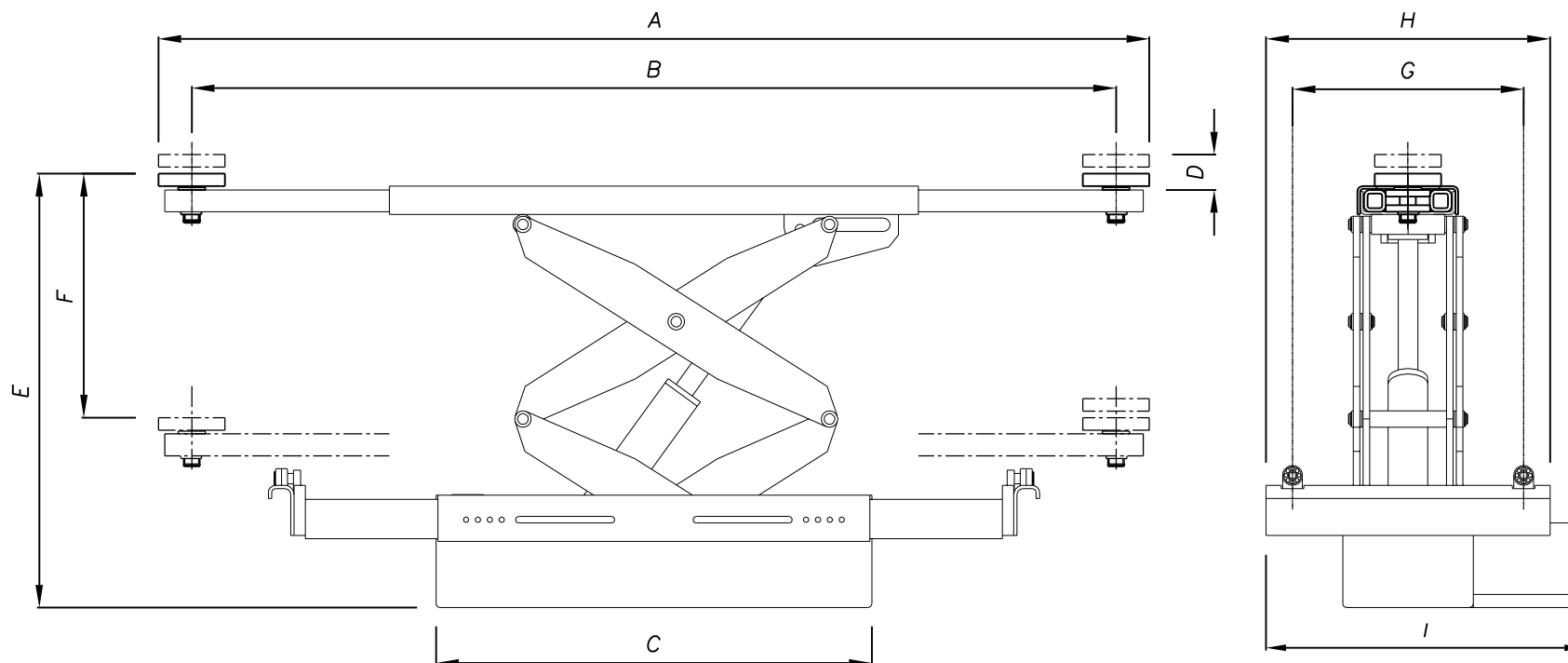
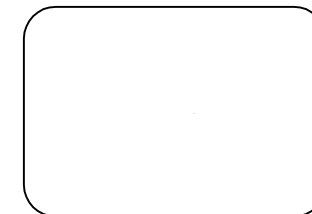




# JACKING BEAMS



*Pompa manuale*  
*Pompe manuelle*  
*Manual pump*  
*Handpumpe*



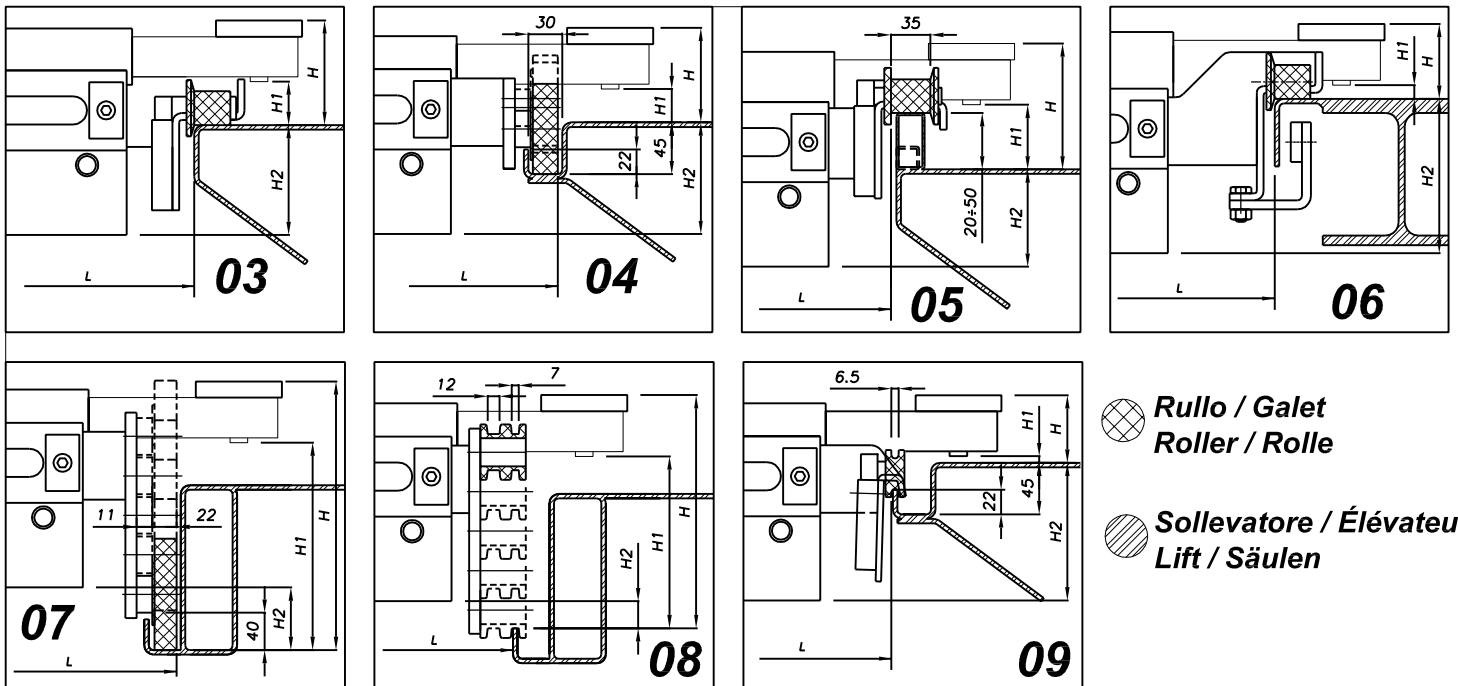
*Pompa pneumatica*  
*Pompe pneumatique*  
*Pneumatic pump*  
*Pneumatischer Pumpe*

	Capacity	A	B	C	D	E	F	G max	H max	I max
	kg	mm	mm	mm	mm	mm	mm	mm	mm	mm
402M-402P	1600	935/1625	810/1500	660	30/60	215/505	290	370	460	520
402/2M-402/2P	2000	935/1625	810/1500	660	30/60	215/505	290	370	460	520
496M-496P	2000	935/1625	810/1500	660	30/60	245/680	435	370	460	520
496/3M-496/3P	3000	935/1725	810/1600	660	30/60	255/690	435	370	460	520
403M-403P	3000	935/1725	810/1600	660	30/60	220/500	280	370	460	520
403ML-403PL	3000	935/1725	810/1600	800	30/60	220/500	280	370	460	520
403T/M-403T/P	3000	1025/1725	900/1600	670	30/60	195/475	280	495	535	630
404M-404P	4000	935/1625	810/1500	760	30/60	260/585	325	390	490	585
406P	6000	960/1620	840/1500	870	30/60	295/615	320	540	620	660



## Traverse idraulica - Hydraulic jacking beam Traverse hydraulique - Hydraulischer Scherenheber

**Mod. 402M - 402P - 402/2 M - 402/2 P - 496M - 496P - 496/3 M - 496/3 P - 403M  
403P - 403ML - 403PL - 403T/M - 403T/P - 404M - 404P - 406P**



MODEL	L (mm)	H (mm)	H1 (mm)	H2 (mm)
402M.03-402P.03	755÷1140	86	6	125
402M.04-402P.04	790÷1160	85÷113	3÷33	131±103
402M.05-402P.05	725÷1090	106	24	110
402M.06-402P.06	860÷1200	86	6	125
402M.07-402P.07	775÷1125	114÷268	37÷191	127÷ -57
402M.08-402P.08	775÷1105	83÷236	1÷1513	134÷ -20
402M.08-402P.09	700÷1070	86	6	125

MODEL	L (mm)	H (mm)	H1 (mm)	H2 (mm)
496M.03-496P.03	775÷1140	88	6	155
496M.04-496P.04	790÷1160	86÷114	4÷32	157±129
496M.05-496P.05	725÷1090	108	26	135
496M.06-496P.06	860÷1200	88	6	155
496M.07-496P.07	775÷1125	118÷272	36÷190	155÷ -29
496M.08-496P.08	755÷1105	82÷235	0÷153	162÷8
496M.09-496P.09	700÷1070	85	5	150

MODEL	L (mm)	H (mm)	H1 (mm)	H2 (mm)
402/2M.03-402/2P.03	775÷1140	90	10	125
402/2M.04-402/2P.04	790÷1160	89÷117	7÷37	131±103
402/2M.05-402/2P.05	725÷1090	110	28	110
402/2M.06-402/2P.06	860÷1200	90	10	125
402/2M.07-402/2P.07	775÷1125	118÷272	41÷195	127÷ -57
402/2M.08-402/2P.08	755÷1105	87÷240	5÷155	134÷ -20
402/2M.09-402/2P.09	700÷1070	90	10	142

MODEL	L (mm)	H (mm)	H1 (mm)	H2 (mm)
496/3M.03-496/3P.03	775÷1140	98	16	154
496/3M.04-496/3P.04	790÷1160	96÷124	14÷42	156±128
496/3M.05-496/3P.05	775÷1140	108	26	144
496/3M.06-496/3P.06	860÷1200	98	16	154
496/3M.07-496/3P.07	775÷1125	130÷284	48÷202	152÷ -32
496/3M.08-496/3P.08	755÷1105	93÷247	11÷165	159÷5
496/3M.09-496/3P.09	700÷1070	85	5	168

MODEL	L (mm)	H (mm)	H1 (mm)	H2 (mm)
403M.03-403P.03	775÷1140	88	6	132
403M.04-403P.04	790÷1160	84÷112	2÷30	136±108
403M.05-403P.05	775÷1140	97	15	123
403M.06-403P.06	860÷1200	88	6	132
403M.07-403P.07	775÷1125	97÷250	15÷168	154÷ -30
403M.08-403P.08	755÷1105	103÷257	21÷175	117÷ -37
403M.09-403P.09	700÷1070	85	5	136

MODEL	L (mm)	H (mm)	H1 (mm)	H2 (mm)
403LM.03-403LP.03	890÷1180	88	6	132
403LM.04-403LP.04	896÷1196	84÷112	2÷30	136±108
403LM.04L-403LP.04L	916÷1282	84÷112	2÷30	136±108
403LM.05-403LP.05	890÷1178	97	15	123
403LM.06-403LP.06	890÷1264	88	6	132
403LM.07-403LP.07	892÷1160	97÷250	15÷168	154÷ -30
403LM.08-403LP.08	835÷1140	103÷257	21÷175	117÷ -37
403LM.09-403LP.09	825÷1115	82	2	138
403LM.09L-403LP.09L	910÷1257	82	2	138

MODEL	L (mm)	H (mm)	H1 (mm)	H2 (mm)
403T/M.03-403T/P.03	745÷1145	85	5	125
403T/M.05-403T/P.05	715÷1115	110	28	90
403T/M.07-403T/P.07	770÷1170	118÷272	41÷195	98÷ -60
403T/M.08-403T/P.08	750÷1155	87÷240	5÷155	115÷ -39
403T/M.09-403T/P.09	730÷1130	85	5	115

MODEL	L (mm)	H (mm)	H1 (mm)	H2 (mm)
404M.05-404P.05	790÷1150	128÷158	46÷76	132±102
404M.06-404P.06	865÷1225	105	23	155
404M.07-404P.07	860÷1250	149÷303	67÷221	111÷ -43
404M.08-404P.08	840÷1230	112÷266	30÷184	148÷ -6

MODEL	L (mm)	H (mm)	H1 (mm)	H2 (mm)
406P.05	950÷1300	106±136	38±68	160± 130
406P.06	950÷1300	86	18	180
406P.07	966÷1304	125±285	40±200	158÷ -2



Suitable for

<b>03</b>	<b>450ATLT – 450LT – 450ATLTJC (standard models)</b>
	<b>430 – 430N – 430AL – 430B – 430BL (special version for UK market or without rail)</b>
	<b>450 – 450N (special version for UK market or without rail old models until 07/2010)</b>
	<b>450AT (special version for UK market or without rail old models until 09/2013)</b>
<b>04 04L</b>	<b>436L – 443 – 443LT – 443ATLT - 443JC – 443SR – 443SRJC – 450N/5 – 450ATLV – 450AT/5 - 450JC – 450JCB – 450JC5 – 450JCBL5 – 450-3D – 442LP – S45NGL – S45STGL – S45N48 - S45AT48 – S45JC – S50JC – S50NGL – S50ATGL</b>
	<b>450 – 450N (new models from 07/2010)</b>
	<b>450ATLT – 450LT – 450ATLTJC (when supplied with optional inner rail)</b>
	<b>450AT (new models from 09/2013)</b>
<b>05</b>	<b>430 – 430N – 430AL – 430B – 430BL – 435 – 436 – 437 – 450AT</b>
	<b>450 – 450N (old standard models until 07/2010)</b>
	<b>450AT (old standard models until 09/2013)</b>
<b>06</b>	<b>460 – 480 – 412</b>
<b>07 08</b>	<b>For other markes lifts (to be verified prior order with our technical office)</b>
<b>9 09L</b>	<b>436L – 443 – 443LT – 443ATLT - 443JC – 443SR – 443SRJC – 450N/5 – 450ATLV – 450AT/5 - 450JC – 450JCB – 450JC5 – 450JCBL5 – 450-3D – 442LP – S45NGL – S45STGL – S45N48 - S45AT48 – S45JC – S50JC – S50NGL – S50ATGL– S36R – S36RAT</b>
	<b>450 – 450N (new models from 07/2010)</b>
	<b>450ATLT – 450LT – 450ATLTJC (when supplied with optional inner rail)</b>
	<b>450AT (new models from 09/2013)</b>